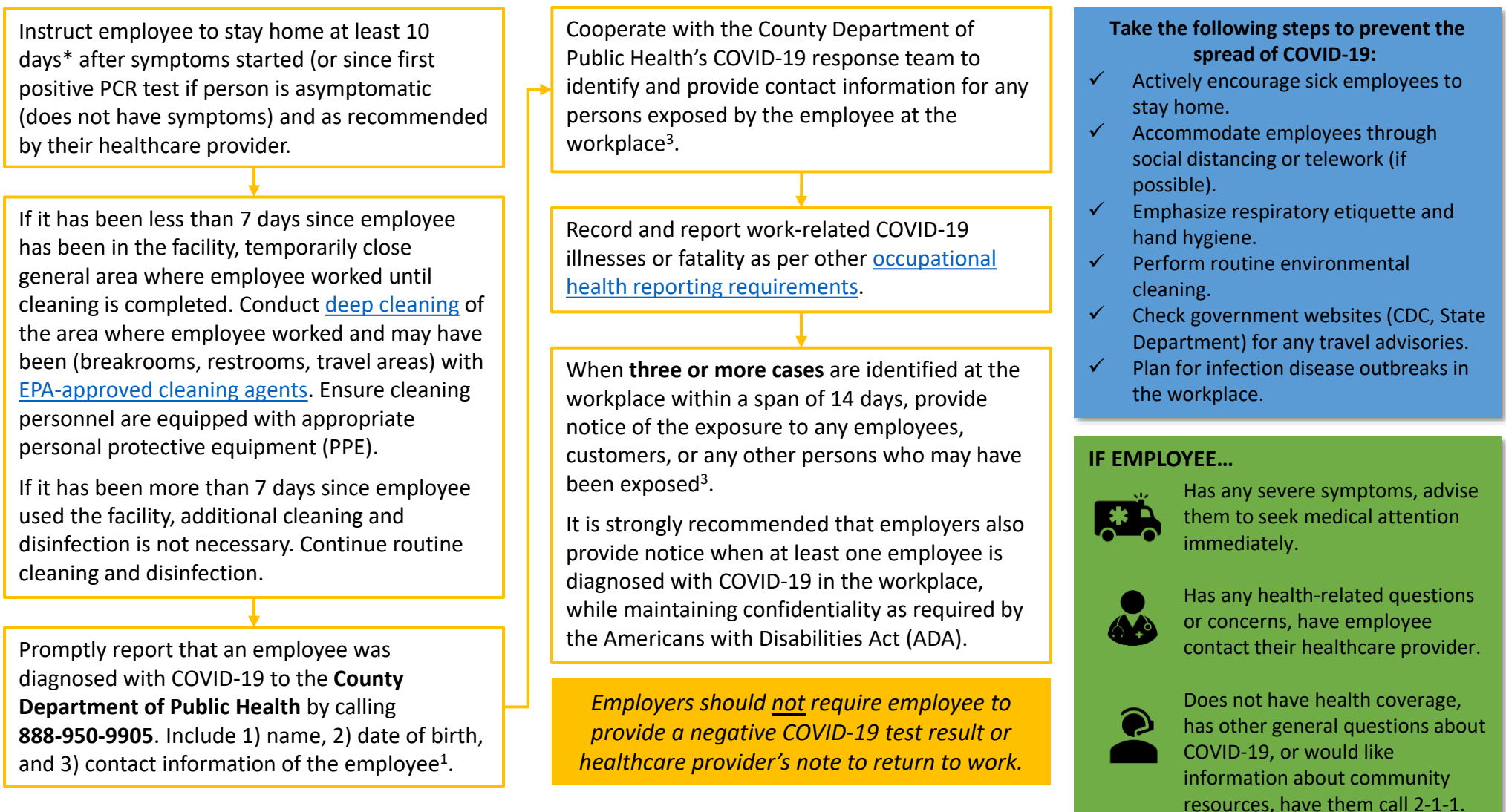







FLOWCHART IF AN EMPLOYEE IS SUSPECTED OR CONFIRMED POSITIVE FOR COVID-19^{1,2}



- Take the following steps to prevent the spread of COVID-19:**
- ✓ Actively encourage sick employees to stay home.
 - ✓ Accommodate employees through social distancing or telework (if possible).
 - ✓ Emphasize respiratory etiquette and hand hygiene.
 - ✓ Perform routine environmental cleaning.
 - ✓ Check government websites (CDC, State Department) for any travel advisories.
 - ✓ Plan for infection disease outbreaks in the workplace.

- IF EMPLOYEE...**
-  Has any severe symptoms, advise them to seek medical attention immediately.
 -  Has any health-related questions or concerns, have employee contact their healthcare provider.
 -  Does not have health coverage, has other general questions about COVID-19, or would like information about community resources, have them call 2-1-1.

RETURN TO WORK WHEN:

- At least 10 days* since start of symptoms (or since first positive PCR test if person is asymptomatic)
- +**
- At least 24 hours since the last fever without the use of fever-reducing medications
- +**
- Improvement in symptoms

*Isolate for 20 days for patients with [severe to critical illness](#) or who are severely immunocompromised.
¹ See [COVID-19 Employer Playbook for a Safe Reopening](#) for more information.
² See [COVID-19 Industry Guidance: Schools and School-Based Programs](#) for more information.
³ As per [San Diego County Public Health Order](#).